



www.chrystals.co.im

The Old Vicarage, Kionslieu Hill, Foxdale, IM4 3HB
Asking Price £945,000

The Old Vicarage, Kionslieu Hill Foxdale, IM4 3HB

Asking Price £945,000

Standing proud in a large tree lined garden, The Old Vicarage is a lovely period detached family house dating back to the late 1890's. This character property has been sympathetically extended and modernised to provide comfortable family accommodation with four reception rooms, fitted country kitchen with link to pantry and utility/boot room. The first floor offers five double bedrooms, ensuite shower room and family bathroom. There is an attached double garage, patio areas and gated gravelled driveway with parking area to the front and gated private driveway to the rear. The ample walled garden surrounds the house and provides a safe lawn for children and pets.





LOCATION

From The Cooil Road roundabout south of Douglas, take the A24 through to the Braaid. Continue heading west along the A24. Follow around the bend in the road at The Eairy and follow on to Foxdale. Pass the clock tower and take next right turn into Kionslieu Hill. Continue a short distance up the hill to where The Old Vicarage can be found on the right hand side.

ENTRANCE VESTIBULE

Period arched panelled door with fanlights surrounding. Victorian tiled mosaic floor. Dado rail.

HALL

Coved ceiling. Radiator. Dado rail. Understairs cupboard.

CLOAKROOM

Low level WC and vanity wash hand basin. Heated towel rail.

DRAWING ROOM

14' 8" x 14' 2" (4.47m x 4.33m)

Coved ceiling. Picture rail. Radiator. Attractive fire surround on black slate hearth, inlay surround with log burner. Two sash windows.

SITTING ROOM

14' 4" x 16' 5" (4.37m x 5m)

Coved ceiling. Frieze. Picture rail. Two radiators. Two sash windows. Attractive fire surround black tiled hearth with open grate. Two wall light points.

STUDY

14' 1" x 9' 10" (4.3m x 3m)

Radiator. Dado rail. Double glazed French doors to balcony overlooking garden.

BREAKFAST ROOM

15' 3" x 11' 10" (4.64m x 3.60m)

Coved ceiling. Electric log effect fire on tiled hearth. Radiator. Tiled floor. Bookshelves. Square opening to

KITCHEN

Fitted country style base and wall units. Belfast sink. Granite worktops and upstands. Heated towel rail. Falcon range oven with five ring gas hob, Falcon extractor hood. Tiled splashback. Pan drawers. Shelved dresser type cupboard. Space for upright fridge freezer. Tiled floor.

INNER HALL

Radiator. Flagstone floor. Double glazed french door to rear garden.

PANTRY

8' 10" x 8' 6" (2.7m x 2.6m)

Fitted base cupboards. Oak worktops. Two upstanding shelved cupboards. Flagstone floor.

UTILITY/BOOT ROOM

10' 6" x 7' 10" (3.2m x 2.4m)

Two full height cupboards, one housing the oil fired central heating boiler. Fitted Oak seat and shoe rack. Overhead storage. Base units with Oak worktops. Single drainer stainless steel sink unit with mixer tap. Plumbed for washing machine. Space for tumble dryer. Flagstone floor. Double glazed French doors to garden.

FIRST FLOOR: HALF LANDING

Stairs from hall to half landing. Radiator. Dado rail.

BEDROOM 5

9' 5" x 13' 6" (2.86m x 4.11m)

Radiator. Dado rail.

BATHROOM

Panelled bath, shower attachment with mixer tap and tiled side. Tiled walls and floor. Pedestal wash hand basin and WC. Shower enclosure. Heated towel rail. Extractor fan.

FULL LANDING

Dado rail.

BEDROOM 4

13' 5" x 10' 2" (4.08m x 3.09m)

Radiator.

BEDROOM 3

15' 1" x 11' 11" (4.6m x 3.64m)

Cupboard housing pressurised hot water tank. Radiator. Loft hatch with slingsby ladder (principally boarded with potential for conversion).

BEDROOM 2

14' 8" x 13' 1" (4.47m x 4m)

Radiator. Two sash windows.

BEDROOM 1

16' 5" x 14' 1" (5m x 4.3m)

Wall radiator. Coved ceiling. Two sash windows. Period style gas fire (disconnected) on tiled hearth. Fitted bank of two double wardrobes and single with mirrored doors.

ENSUITE BATHROOM/WC

Walk-in shower, low level WC and pedestal wash hand basin. Heated towel rail. Fully tiled walls to shower and floor.

ATTACHED DOUBLE GARAGE

20' 0" x 20' 4" (6.1m x 6.2m)

Electric up and over door. Power and light. Plumbing for washing machine.

OUTSIDE

Paved terrace with raised lawn garden which extends to rear, side and front of the house. There is a further south-facing patio with seating area. Concealed oil tank. Flagged seating area. Manx stone walled side garden with mature trees. Five-bar gate to front garden, laid to lawn with shaped shrubs, hedges and apple trees. Gravelled driveway with parking area. Rear gated paved driveway. Shrubs to front of house and steps up to the front door.

SERVICES

Mains water, electricity and drainage. Oil central heating. Mains gas.

VIEWING

Viewing is strictly by appointment through CHRYSTALS Please inform us if you are unable to keep appointments.

POSSESSION

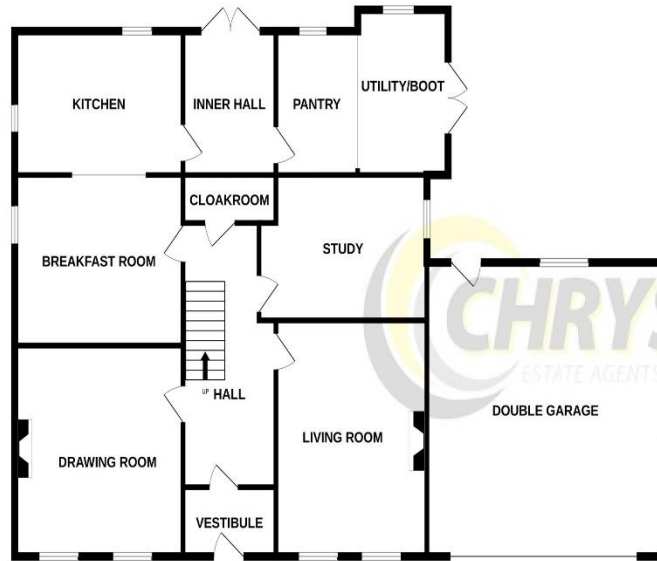
Vacant possession on completion of purchase. The company do not hold themselves responsible for any expenses which may be incurred in visiting the same should it prove unsuitable or have been let, sold or withdrawn. **DISCLAIMER** - Notice is hereby given that these particulars, although believed to be correct do not form part of an offer or a contract. Neither the Vendor nor Chrystals, nor any person in their employment, makes or has the authority to make any representation or warranty in relation to the property. The Agents whilst endeavouring to ensure complete accuracy, cannot accept liability for any error or errors in the particulars stated, and a prospective purchaser should rely upon his or her own enquiries and inspection. All Statements contained in these particulars as to this property are made without responsibility on the part of Chrystals or the vendors or lessors.







GROUND FLOOR



1ST FLOOR



Measurements are approximate. Not to scale. Illustrative purposes only
 Made with Metropix ©2023

Since 1854



DOUGLAS
 31 Victoria Street
 Douglas IM1 2SE
 T. 01624 623778
 E. douglas@chrystals.co.im

PORT ERIN
 23 Station Road
 Port Erin IM9 6RA
 T. 01624 833903
 E. porterin@chrystals.co.im

COMMERCIAL
 Douglas Office: 01624 625100, commercial@chrystals.co.im

RENTALS
 Douglas Office: 01624 625300, douglasrentals@chrystals.co.im

Directors: Shane Magee M.R.I.C.S.; Neil Taggart BSc (Hons), M.R.I.C.S.; Joney Kerruish BSc (Hons), M.R.I.C.S.; Dafydd Lewis BSc (Hons), M.R.I.C.S., MA (Camb), Dip Surv Prac; Consultants: Keith Kerruish
 Registered in the Isle of Man No. 34808, Chrystal Bros, Stott & Kerruish Ltd. Trading as Chrystals. Registered Office, 31 Victoria Street, Douglas, Isle of Man IM1 2SE.